

CRYOCELL

ULTRA LOW ABLATION
TEMPERATURES FROM
THE SIMPLEST DESIGN



Liquid N₂ cryocell for the NWR Platform

Features

Temperature range -20°C to -100°C
ensuring complete, rapid freezing of
samples

Achieves target temperature in <15 minutes

Stable temperature at -80°C for >6 hours

Easily installed in TwoVol1 or
TwoVol2 chamber <2 minutes

Suitable for wet tissues and fluid
inclusions ensuring the smallest
sized ice crystals

CryoCell

Specifications summary

Performance Specifications

Minimum Temperature	-100°C
Maximum Temperature	-20°C
Working area	100mm x 100mm (50mm cooled) 150mm x 150mm (100mm cooled – option)
Cooling Mechanism	Liquid N ₂
Temperature Control	Closed-loop temperature sensor mounted directly in the chamber
Coolant volume	2 Litres
Time to target temp	<15 minutes
Cooling time (single fill)	>6 hours @ -80°C
Temperature stability	±1°C over 6 hours <0.5% RSD over 6 hours

Compatibility

Platforms	NWR193, NWR213, NWR266macro, NWRfemto, NWRimage
Sample chambers	TwoVol1 (100mm) TwoVol2 (100mm) TwoVol2 (150mm)
Dual Concentric Injector (DCI)	For 10X improved washout times

Additional Options

Signal Smoothers	Glass bulb signal smoother and Sentinel signal smoother
------------------	---

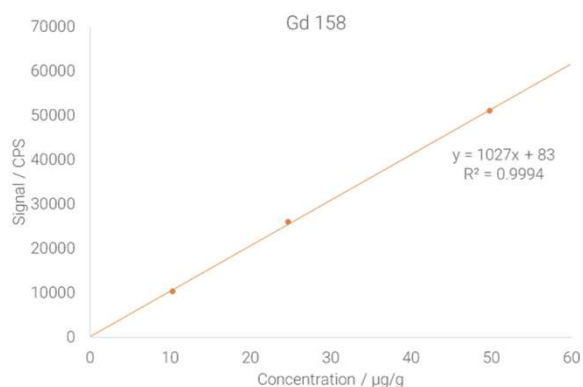


Figure 1. Calibration curve for tissue ablation formed via ablation of "wet" doped Agar gel



Figure 2. Clean ablation crater, as a result of the rapid, efficient freezing of the CryoCell, on a fluid inclusion in quartz.

